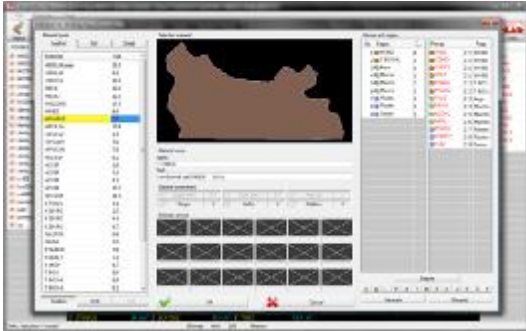




CAD system for material consumption calculation



CalcCobblerXQ allows to digitize patterns or read shapes from CAD data. These parts could be virtually nested to provide material consumption norm.

CalcCobblerXQ new version was projected and developed for the MS Windows operation system, it utilizes long time experiences of the best shoe designers worldwide, in synergy with newest methods and features from IT branch.

CalcCobblerXQ associates all of usual calculation methods in one application: interactive and automatic nesting for several types of material, automatic pattern assessment (parallelogram PAS) and quick estimate by SLM method.

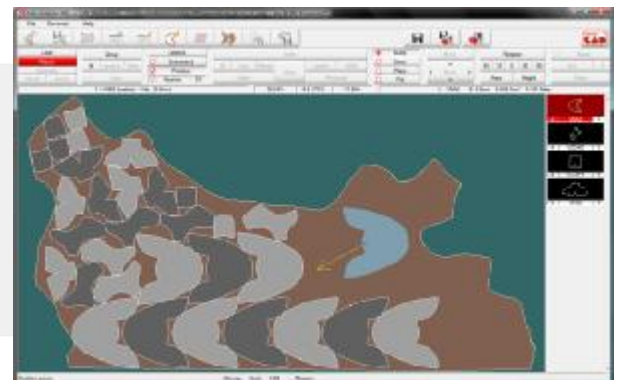
New user interface and functionality allows to increase significantly the effectiveness of the traditional calculation methods. The results can be exported into several data formats for further electronic processing or printed in various printouts, both in graphical and spreadsheet form.

Positioning into leathers

Database of 30 standardized leather shapes, possibility to add new shapes

Sophisticated interactive piece control (smooth rotation, mirroring etc.)

Quick and reliable piece bumping



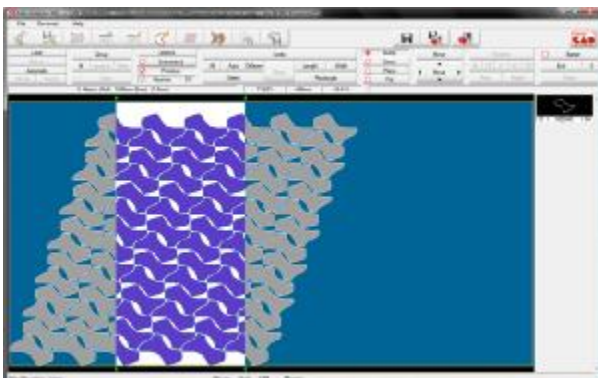
Positioning into roll materials

Easy material definitions (set of parameters like dimensions, buffer, margin etc.)

Semiautomatic positioning into material width

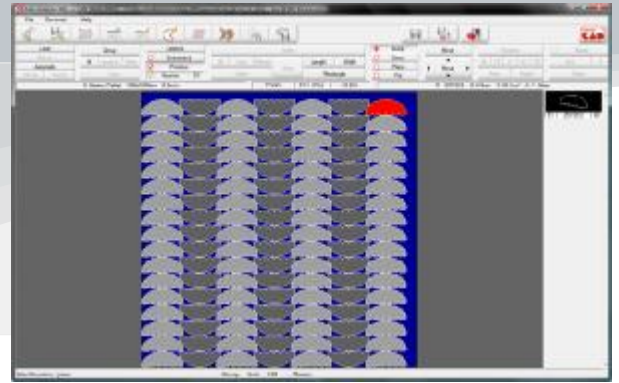
Comfort work with groups of pieces

Easy calculation for defined area



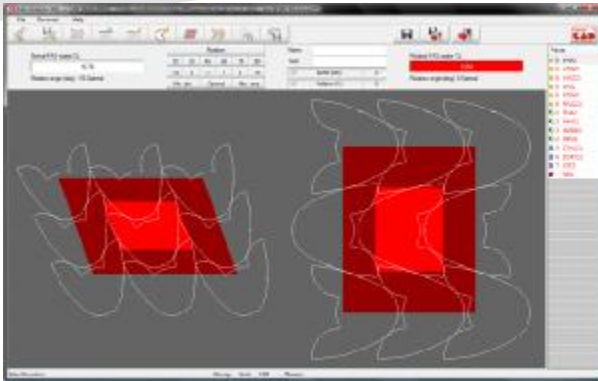
Positioning into sheet materials

- Automatic nesting with whole sheet area fill-up
- Consumption norm calculated as a part of the sheet per pair



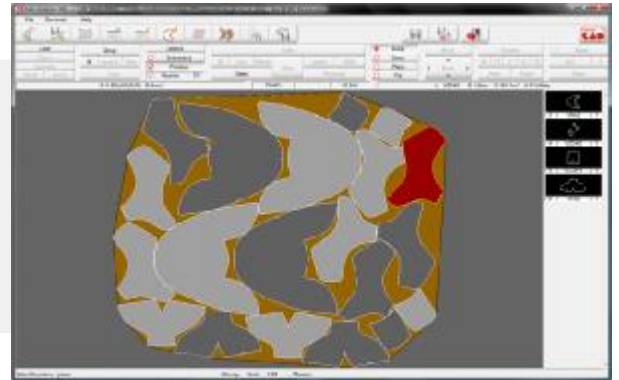
Parallelogram calculation

- Automatic assessment of each model pattern into parallelogram provides inter-parts waist values
- Perfect tool for designers to judge nesting efficiency of the parts
- Basic calculation runs automatically by data reading (or shell creating)



SLM calculation

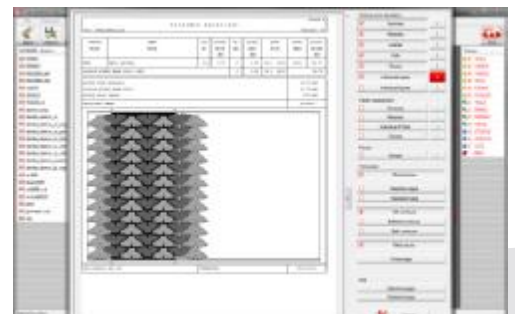
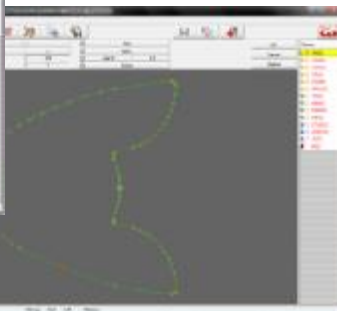
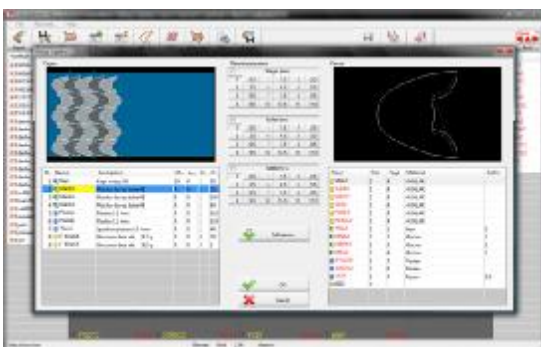
- Consumption norm estimate by automatic encircling of defined piece group
- Leather parts consumption norm is available instantly



What's interesting for IT specialist

Easy to install

- Entirely redesigned application kernel on MS Windows 10/8.x/7/Vista platform, respecting newest Microsoft technologies
- Efficient combination of user friendly features of operating system with ClassiCAD's typical technological approach
- Individual maintenance: widely configurable technological properties, personal settings of user interface
- High performance on standard "office" computers, optimized memory and other system resources treatment
- Easygoing cooperation with peripherals



ClassiCAD